

Frequency Multiplier

FK-3000

Output 140 to 3000 MHz

Maximum Ratings

Operating Temperature	-55°C to 100°C
Storage Temperature	-55°C to 100°C
RF Input Power	200mW

Features

- wideband, 140 to 3000 MHz
- rugged, shielded case
- low conversion loss, 11 dB typ.

Applications

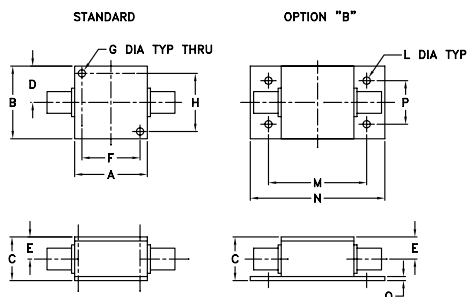
- synthesizers
- local oscillators



CASE STYLE: F55

Connectors	Model	Price	Qty.
SMA	FK-3000	\$79.95	(1-9)
BRACKET (OPTION "B")		\$2.50	(+1)

Outline Drawing



Outline Dimensions (inch/mm)

A	B	C	D	E	F	G	H
1.25	1.25	.75	.63	.38	1.000	.125	1.000
31.75	31.75	19.05	16.00	9.65	25.40	3.18	25.40

J	K	L	M	N	P	Q	wt
--	--	.125	1.688	2.18	.75	.07	grams
--	--	3.18	42.88	55.37	19.05	1.78	70.0

Frequency Multiplier Electrical Specifications

MODEL NO.	MULTIPLICATION FACTOR	FREQUENCY (MHz)		INPUT POWER (dBm)		CONVERSION LOSS (dB)		*HARMONIC OUTPUT (dBc)					
		Input	Output	Min.	Max.	Typ.	Max.	F1 Typ.	F1 Min.	F3 Typ.	F3 Min.	F4 Typ.	F4 Min.
FK-3000	2	70-1000	140-2000	12	15	11.0	14.0	31	20	40	25	15	10
		1000-1500	2000-3000	12	15	12.0	17.5	22	15	30	20	30	14

*Harmonic output below power level of F2

Typical Performance Data

Output Frequency (MHz)	Conversion Loss (dB)	Harmonic Output (-dBc)		
		F1	F3	F4
140.00	10.32	49.20	51.20	15.70
200.00	10.54	50.60	54.20	15.60
400.00	10.39	43.70	54.10	16.90
900.00	10.94	34.30	46.80	15.60
1000.00	10.91	34.80	47.80	14.90
1400.00	10.69	29.70	43.40	16.90
1800.00	10.56	28.10	39.50	23.10
2000.00	10.82	25.80	33.90	21.70
2400.00	12.43	25.10	42.90	25.60
3000.00	13.30	21.90	29.70	40.20

